



# CASES PARTNERSHIP

COMMUNITY APPROPRIATE SUSTAINABLE ENERGY SECURITY



The CASES Partnership is a consortium of researchers, communities, private sector, and government and non-government entities from across northern Canada, Alaska, Sweden, and Norway.

## FOCUS

The Partnership will work to advance energy security in the North by:

- Working with communities to develop (or advance existing) community energy profiles;
- Working with communities and utilities to explore energy futures and assess options, based on community values and vision;
- Identifying international best-practices in renewable energy development, including opportunities for community energy governance and self-sufficiency;
- Connecting Canadian northern communities with sister-communities from Alaska, Sweden, and Norway to learn directly from their experiences;
- Co-producing community energy planning tool-kits for northern communities to help in renewable energy development;
- Hosting story-teller forms so communities can share knowledge, experience, and vision for energy in the North; and
- Establishing an on-line Energy Gateway for hosting community energy planning information, knowledge sharing, and connecting communities with communities and communities with researchers.

## GOAL

*The overall goal of the CASES Partnership is to co-create and broker the knowledge, understanding, and capacity to design, implement and manage renewable energy systems that support and enhance social and economic values for northern communities.*



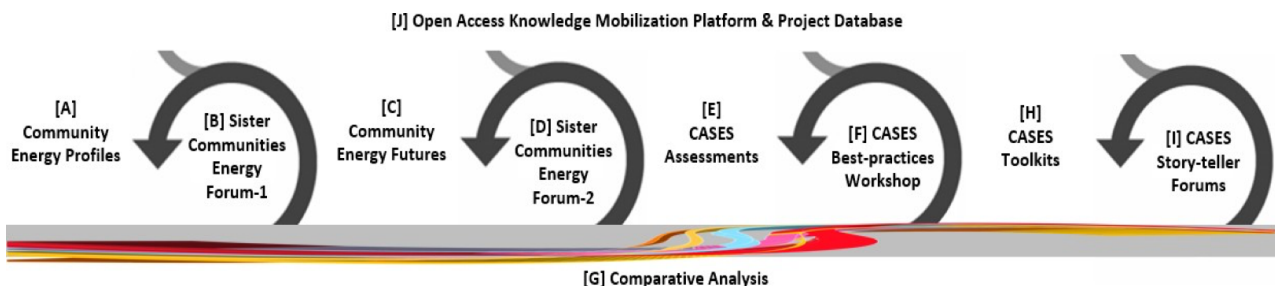
UNIVERSITY OF  
SASKATCHEWAN



*The CASES Partnership facilitates the sharing of experience so that not all communities have to experience the same challenges or recreate solutions, thereby expediting the learning experience and accelerating renewable energy innovation.*

## APPROACH

This is a 7-year research and knowledge sharing partnership initiative. Not all stages of the project are "research". The project involves a combination of research and knowledge sharing events to build a foundation for, and advance, community appropriate energy solutions. The main steps involved in the project over its 7-year duration are illustrated below.



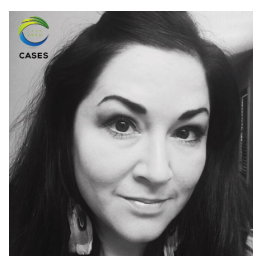
## WHO WE ARE



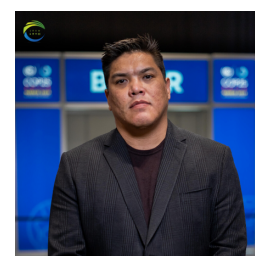
**DR. GREG POELZER**  
Co-Director  
greg.poelzer@usask.ca



**DR. BRAM NOBLE**  
Co-Director  
b.noble@usask.ca



**DR. CRYSTAL FRASER**  
Research Associate  
cgfraser@ualberta.ca



**JORDAN PETERSON**  
Deputy Grand Chief  
Gwich'in Tribal Council  
jordan.peterson@gwichin.nt.ca



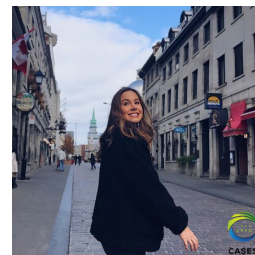
**JACKIE MARTIN**  
Project Manager  
jackie.martin@usask.ca



**SARA THOMPSON**  
Student Researcher  
sara.thompson@usask.ca



**CHRIS BESPFLUG**  
Student Researcher  
chris.bespflug@usask.ca



**RHYS MCMASTER**  
Student Researcher  
rhys.mcmaster@usask.ca